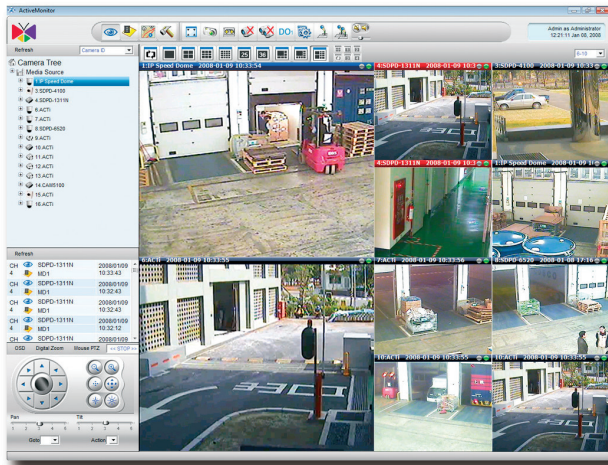


# ACTi NVR v2.3

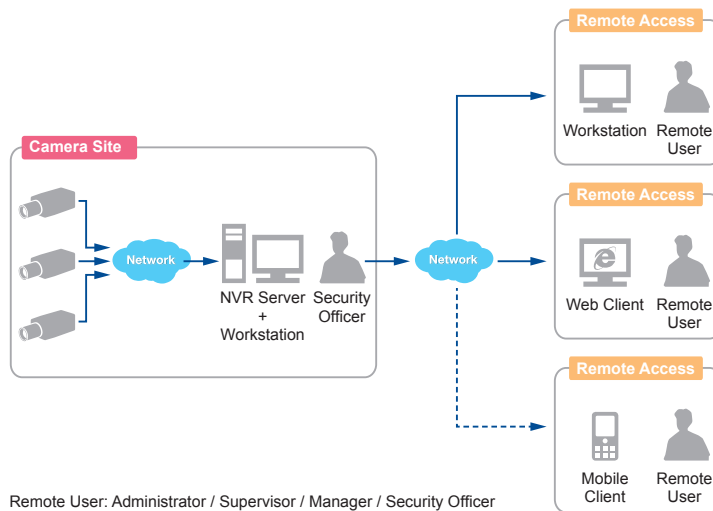
ACTi Network Video Recorder



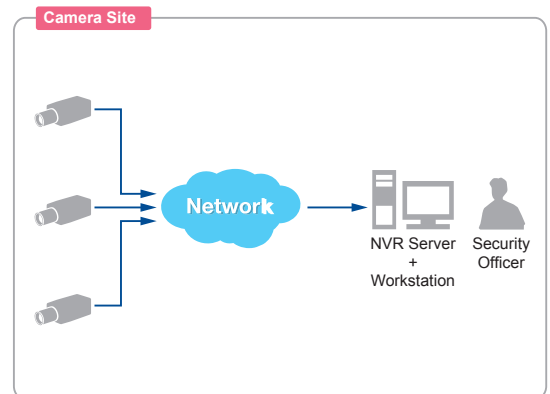
- Manage up to 64 cameras or video encoders
- Recording up to 64 Channels
- Live view local up to 64 Channels, remote up to 64 Channels
- Synchronized playback local up to 4 Channels
- Export video with RAW and AVI formats
- Event trigger, response and notification
- Mobile Client, Web Client, Workstation
- Location-based management with eMap
- 16-channel free license included (Enterprise)
- 64-channel free license included (Professional)
- Non-ACTi camera support via licensed Camera Device Pack

## SOLUTION ARCHITECTURE

### NVR Enterprise



### NVR Professional



## BUNDLED UTILITIES

	IP Utility	Search, list and manage devices within local area network, upgrade firmware, backup/restore configuration
	Archive Player	Forward and backward playback of RAW files with 1x-8x speeds together with manual snapshot function
	Media Converter	Convert one or many RAW video clips into a sequence of JPEG snapshots or into AVI video clips and save locally
	Backup Wizard	Backup and restore configuration of ACTi NVR and CMS
	Streaming Explorer	Test device connections, PTZ and event functions via web browser

# ACTi NVR v2.3

## PRODUCT SPECIFICATION

### NVR 2.3 Enterprise

### NVR 2.3 Professional

	NVR 2.3 Enterprise	NVR 2.3 Professional
<b>• General</b>		
Full Name	ACTi Network Video Recorder v2.3 Enterprise	ACTi Network Video Recorder v2.3 Professional
Maximum Number of Clients	Unlimited	1 (local)
Maximum Number of Cameras	64	64
Free License	16 channels	64 channels
Compression	H.264, MPEG-4, MJPEG	
<b>• Live View</b>		
Display Layout Mode	1, 4, 6, 8, 9, 10, 16, 25, 36, 49, 64	
Layout Manager	An interface to define display layouts and the pre-set cameras within layouts; full-screen mode available	
Layout Tour	Automatic switch between different display layouts	
Digital Zoom	Zoom in/out digitally by mouse scroll wheel or by zoom control buttons	
Camera Tree	Drag and drop video source from camera tree into display layout	
Manual Recording / Snapshot	Instant recording upon mouse click / Instant snapshot upon mouse click or hot key	
Event Panel	Display event status upon alarm or upon connection loss or recovery between server and client or when the allocated disk space is full	Display event status upon alarm or when the allocated disk space is full
Two-way Audio	Audio sound from and to all the audio supported devices; audio broadcast to multiple devices at the same time	
Dual Stream Management	Live view of stream 1 or stream 2 of dual stream devices	
<b>• E-map</b>		
Layout	Area maps with camera icons, small live view windows; hyperlinked	
Map Switch and Tour	Manual switch and auto tour modes selectable	
Setup	E-map image upload; camera positioning; map linking	
PTZ Mode	Mouse PTZ mode to control E-map video streams	
<b>• PTZ</b>		
Control	Pan, tilt and zoom controls; speed control; both buttons and overlay controls	
Preset Points and Tours	Create preset points; create auto tours between preset points	
Number of Preset Points	32	
Joystick	USB based joystick supported	
Absolute Position	Supports absolute position function of PTZ and Speed Dome cameras for convenient navigation	
Default Protocol	Pelco-P, Pelco-D, Lilin, Dynacolor, Samsung, Kampro, Sony Visca, Panasonic	
User Defined Protocol	User defined PTZ or Housing commands	
<b>• Recording</b>		
Scheduled Recording	Record video with user defined schedule	
Event Recording	Record video when the alarm event is triggered, including the pre-event buffered video clip	
Manual Recording	Instant recording upon mouse click	
Dual Stream Management	Recording of stream 1 or stream 2 of dual stream devices	
<b>• Search &amp; Playback</b>		
Time Based Video Search	Search video recordings by time or channel	
Event Based Video Search	Search alarm triggered video recordings	
Event Based Snapshot Search	Event triggered snapshots listed as clickable thumbnails for full-size view and export	
Activity and Status Log Search	Search for log of video loss/recovery, network disconnect/reconnect, alarm events, user activity; XLS export of all logs	
Playback Control	Forward and backward playback with speeds 1x/2x/4x/8x or frame-by-frame; pause; stop	
Synchronized Playback	4 channels	
Manual Snapshot	Instant snapshot from playback upon mouse click	
Digital Zoom	Zoom in/out digitally by mouse scroll wheel or by zoom control buttons	
Video Cropping	Crop a short video clip from long recording file and save it as an independent file	
Video Export	Export video clips in AVI format	
<b>• Event Management</b>		
Event Trigger	Video motion detection; Passive IR sensor; External device through digital input; Video loss and recovery; Network loss and recovery	
Event Response	Record video; Pop-up window with live video; Switch to hotspot window; Play alert audio file or beep; Activate external device through digital output; Upload snapshot to FTP server; Execute system command to activate other programs; E-mail notification with snapshots; Event logging	
Manual Event	Manually activate external devices through digital output via live view monitor	
<b>• System</b>		
Permission Control	Unlimited number of users, multi-level permission, camera group permission, e-Map permission for different users	
Security	HTTPS protocol between NVR server and client program	
Language	Multi-language support	
<b>• Remote Access</b>		
PC Client Program	User interface program (Workstation) with live view, PTZ, playback, e-map, event management, setup	N/A
PC Web Browser	Microsoft Internet Explorer 8.0 or 9.0 with live view, PTZ, playback, e-map, event management, setup	N/A
Mobile Client Program	Mobile device application (MobileGo) supports live view, PTZ control, event or time based search and playback Supported devices: iPhone, iPad, iPod	N/A
<b>• System Requirements*</b>		
Server PC with Local Client	1-16 channels: Intel Core 2 Duo 2.66 GHz 32-bit, 4GB RAM 17-64 channels: Intel Core i7-920 2.67 GHz 64-bit, 6GB RAM	
Server PC without Local Client	1-64 channels: Intel Core 2 Duo 2.4 GHz 32-bit, 4GB RAM	N/A
Remote Client PC	1-16 channels: Intel Core 2 Duo 2.66 GHz 32-bit, 4GB RAM 17-64 channels: Intel Core i7-920 2.67 GHz 64-bit, 6GB RAM	N/A
Operating System	32/64 bit: Windows 7 (Professional), Windows Server 2008 (Enterprise, Standard), Windows Vista (Business, Enterprise, Ultimate), Windows Server 2003 SP2, Windows XP Professional SP3	
Browser	Microsoft Internet Explorer 8.0 or 9.0	
Web Server	Microsoft IIS Server	
<b>• Integration</b>		
Unified Solution	Fully compatible with ACTi cameras, encoders and CMS v1.1	Fully compatible with ACTi cameras and encoders
ISV CMS Integration	Software Development Kit (SDK) available	N/A

\* These specifications are based on following camera settings:  
 Single stream mode: 1280x1024, 3Mbps, 18fps, MPEG-4  
 Dual stream mode: 1280x1024, 3Mbps, 18fps, H.264 (recording) and 640x480, Quality:100, 18fps, MJPEG (live view)  
 For more details about system requirements, please refer to Project Planner on [www.acti.com](http://www.acti.com)

\* All specifications are subject to change without notice.  
 \* All brand names and registered trademarks are the property of their respective owners.

[www.acti.com](http://www.acti.com)

