

# NVR 3 Enterprise

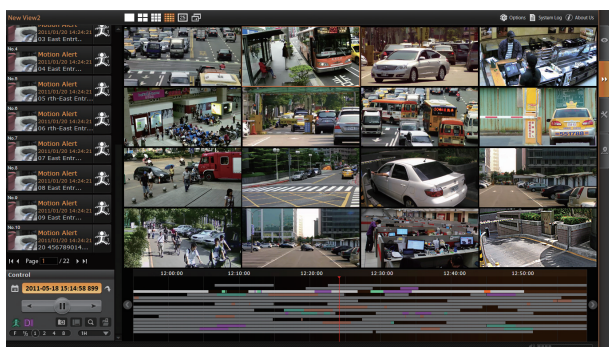
ACTi Network Video Recorder



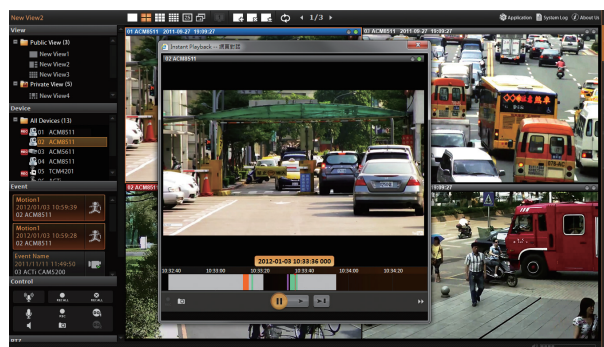
- Manage up to 100 cameras or video encoders (Expandable to unlimited cameras via CMS)
- Recording up to 100 Channels
- Live view local up to 64 Channels, remote up to 64 Channels
- Synchronized playback local up to 64 Channels
- Export video with RAW and AVI formats
- Event trigger, response and notification
- Mobile Client, Web Client, Workstation
- Location-based management with eMap
- 16-channel free license included
- Non-ACTi camera support via licensed camera Device Pack

## SPECIAL FEATURES

Up to 64 channels synchronized playback

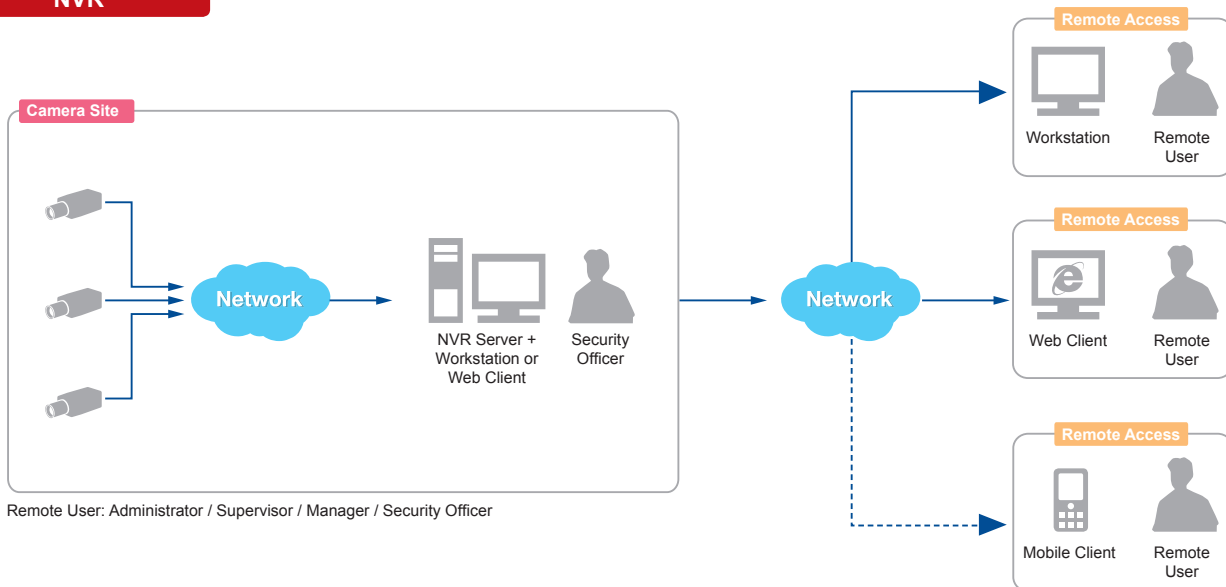


Instant playback in live view window



## SOLUTION ARCHITECTURE

NVR



# NVR 3 Enterprise

## PRODUCT SPECIFICATION

### NVR 3 Enterprise

<b>• General</b>				
Full Name	ACTI Network Video Recorder 3 Enterprise			
Maximum Number of Clients	1 local, unlimited remote (recommended up to 5)			
Maximum Number of Cameras	100 (Expandable to unlimited cameras via CMS)			
Free License	16 channels for ACTI devices, 1 channel for third-party device			
Compression	H.264, MPEG-4, MJPEG			
<b>• Live View</b>				
Display Layout Mode	1, 4, 5, 6, 8, 9, 10, 12, 16, 18, 24, 25, 35, 36, 48, 49, 64			
View Manager	An interface to define display layouts and the pre-set cameras within layout in the public or private view			
View Patrol	Automatic switch between different views or devices			
View Panel	Contains the list of pre-defined views for quick launch			
Device Panel	Drag and drop video source from device panel into display layout; display camera status			
Digital Zoom	Zoom in/out digitally by mouse scroll wheel or by zoom control buttons			
Manual Recording / Snapshot	Instant recording upon mouse click / Instant snapshot upon mouse click or hot key			
Event Panel	Display event status upon alarm or upon connection loss or recovery between server and client or when the allocated disk space is full			
Two-way Audio	Audio sound from and to all the audio supported devices; audio broadcast to multiple devices at the same time			
Dual Stream Management	Live view of stream 1 or stream 2 of dual stream devices			
Instant Playback	Instant playback in live view window			
<b>• e-Map</b>				
Layout	Area maps with camera icons, small live view windows; hyperlinked			
Setup	e-Map image upload; camera positioning; vision angle and pointed direction of camera; view positioning; source positioning			
PTZ Mode	Mouse PTZ mode to control e-Map video streams			
<b>• PTZ</b>				
Control	Pan, tilt and zoom controls; speed control; both buttons and overlay controls			
Preset Points and Tours	Create preset points; create auto tours between preset points			
Number of Preset Points	32			
Joystick	USB based joystick supported			
Support Protocol	Auto-detect camera's PTZ protocol. Available protocols: ACTI, Pelco-P, Pelco-D, Dynacolor, Visca			
<b>• Recording</b>				
Scheduled Recording	Record video with user defined schedule			
Event Recording	Record video when the alarm event is triggered, including the pre-event buffered video clip			
Speed Up	Different recording frame rate settings for non-event and triggered event			
Manual Recording	Instant recording upon mouse click			
Pre-Event Recording	User-defined time period to record before event occurs, and the maximum buffer is 60 seconds (default 5 seconds)			
Post-Event Recording	User-defined time period to record after event occurs, and the maximum buffer is 3600 seconds (default 30 seconds)			
Dual Stream Management	Recording of stream 1 or stream 2 of dual stream devices			
<b>• Search &amp; Playback</b>				
Recording Search	Search video recordings by time, event, channel, bookmark and listed as clickable thumbnails for full-size view and snapshot download			
Playback Control	Continuous forward and backward playback with speeds 1x/2x/4x/8x or frame-by-frame; pause; stop			
Synchronized Playback	64 channels			
Manual Snapshot	Instant snapshot from playback upon mouse click			
Digital Zoom	Zoom in/out digitally by PIP (Picture-in-Picture)			
Video Export	Export video clips in AVI or RAW format; text overlay supported			
<b>• Event Management</b>				
Event Trigger	Video motion detection; Passive IR sensor; External device through digital input; Video loss and recovery; Network loss and recovery; Server loss and recovery; Disk full; Disk not found			
Event Response	Record video; Pop-up window with live video; Switch to hotspot window; Play beep sound; Activate external device through digital output; Upload snapshot to FTP server; Execute system command to activate other programs; E-mail notification with snapshots; Command a PTZ device to go to a preset point			
Manual Event	Manually activate external devices through digital output via live view monitor			
Event Handling	Define the schedule of event manager			
<b>• Video Analytics</b>				
Smart Search	Smart search of recorded video by Motion Detection and Tamper			
<b>• System</b>				
Permission Control	Unlimited number of users, Active Directory, Customizable permissions for user groups, Playback password protected, Password validity period			
Language	Multi-language support			
Language Import/Export	Possibility to import or export language packs for convenient local language management			
Customizable User Interface	Define the layout of user interface for live view and playback			
Quick Setup	Configure basic settings of NVR			
GPS Position	Manual setting			
<b>• Remote Access</b>				
PC Client Program	User interface program (Workstation) with live view, PTZ, playback, e-Map, event management, setup			
PC Web Browser	Microsoft Internet Explorer with live view, PTZ, playback, e-Map, event management, setup			
Mobile Client Program	Mobile device application (Active Mobile Client) supports live view, PTZ control, event or time based search and playback Supported devices: iPhone, iPad, iTouch and Android device			
<b>• System Requirements*</b>				
Display Mode	Live Layout	Minimum	Recommended	
Server PC with Local Client	1-16	Intel Core 2 Quad 2.4 GHz, 4GB RAM	Intel i5 2.4 GHz, 4GB RAM	
	17-64	Intel i5 2.4 GHz, 4GB RAM	Intel i7-920 2.67 GHz, 4GB RAM	
Server PC without Local Client	0	Intel Core 2 Quad 2.4 GHz, 4GB RAM	Intel i5 2.4 GHz, 4GB RAM	
	1-16	Intel Core 2 Quad 2.4 GHz, 4GB RAM	Intel i5 2.4 GHz, 4GB RAM	
Remote Client PC	1-16	Intel Core 2 Quad 2.4 GHz, 4GB RAM	Intel i5 2.4 GHz, 4GB RAM	
	17-64	Intel i5 2.4 GHz, 4GB RAM	Intel i7-920 2.67 GHz, 4GB RAM	
PC Operating System	Windows 7, Windows 8, Windows Server 2012			
PC Web Browser	Internet Explorer 8, Internet Explorer 9, Internet Explorer 10			
<b>• Integration</b>				
Unified Solution	Fully compatible with ACTI cameras, encoders, central management system, TV wall and intelligent video surveillance software			
Open Platform Solution	Support ONVIF compliant devices			
ISV CMS Integration	Software Development Kit (SDK) available			
Licensing Part Numbers	Description	Free Channel Bundled	Maximum Number of Channels	Part Number
	ACTI video device license	16	100	LNVR3001
	Third-party video device integration license	1		LCDP1000

\* These specifications are based on following camera settings:

Single stream mode: 1280x1024, 3Mbps, 18fps, MPEG-4; Dual stream mode: Stream 1 - 1280x1024, 3Mbps, 18fps, H.264 / Stream 2 - 640x480, High Quality, 18fps, MJPEG

For more details about system requirements, please refer to Project Planner on [www.acti.com](http://www.acti.com)

\* All specifications are subject to change without notice.

\* All brand names and registered trademarks are the property of their respective owners.

[www.acti.com](http://www.acti.com)

